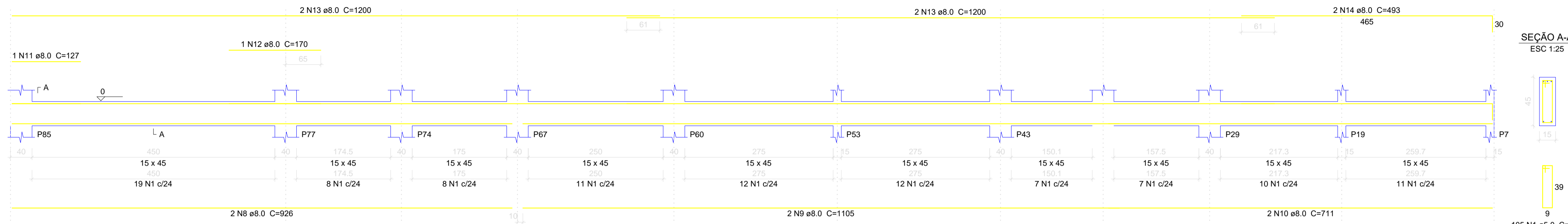
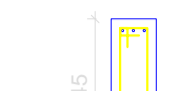


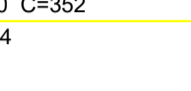
V31
ESC 1:50



SEÇÃO A-A
ESC 1:25



SEÇÃO A-A
ESC 1:25



Relação do aço

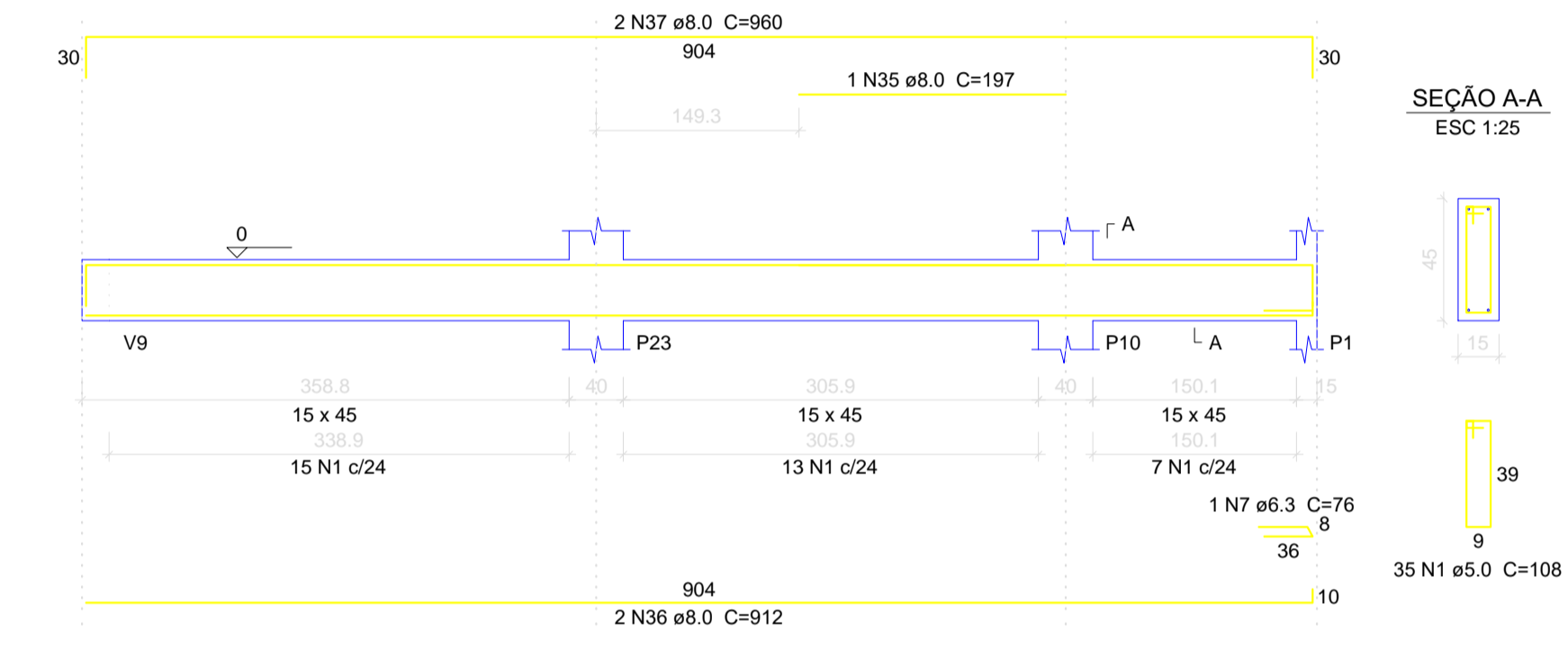
AÇO	N	DIAM (mm)	QUANT (Barras)	UNIT (cm)	C.TOTAL (cm)
V31	1	5.0	437	108	47196
V34	2	5.0	2	283	566
V37	3	5.0	36	118	4248
V41	4	6.3	1	97	97
V44	5	6.3	1	390	390
V47	6	6.3	3	757	2271
	7	6.3	1	76	76
	8	8.0	2	926	1852
	9	8.0	2	1105	2210
	10	8.0	2	711	1422
	11	8.0	1	127	127
	12	8.0	1	170	170
	13	8.0	6	1200	7200
	14	8.0	2	493	986
	15	8.0	2	324	648
	16	8.0	2	352	704
	17	8.0	2	374	748
	18	8.0	2	430	860
	19	8.0	1	308	308
	20	8.0	2	524	1048
	21	8.0	2	118	236
	22	8.0	1	138	138
	23	8.0	2	198	396
	24	8.0	2	388	776
	25	8.0	2	92	184
	26	8.0	2	416	832
	27	8.0	7	739	5173
	28	8.0	2	554	1108
	29	8.0	2	582	1164
	30	8.0	2	483	966
	31	8.0	1	122	122
	32	8.0	2	511	1022
	33	8.0	4	639	2556
	34	8.0	4	363	1452
	35	8.0	1	197	197
	36	8.0	2	912	1824
	37	8.0	2	960	1920
	38	8.0	2	1004	2008
	39	8.0	2	343	686
	40	8.0	1	135	135
	41	8.0	2	228	456
	42	8.0	2	555	1110
	43	8.0	2	564	1128
	44	8.0	2	410	820
	45	8.0	2	438	876
	46	8.0	2	1031	2062
	47	8.0	1	117	117
	48	8.0	1	160	160
	49	8.0	2	1059	2118
	50	8.0	1	201	201
	51	8.0	1	188	188

Resumo do aço

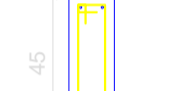
AÇO	DIAM (mm)	C.TOTAL (m)	PESO + 10% (kg)
CA50	6.3	0.8	0.2
	8.0	309.6	134.4
	10.0	1906.8	1293.4
	12.5	35.7	37.8
CA60	5.0	3614.3	612.8
PESO TOTAL (kg)			
CA50	1465.5		
CA60	612.8		

Volume de concreto (C-25) = 25.11 m³
Área de forma = 433.69 m²

V42
ESC 1:50



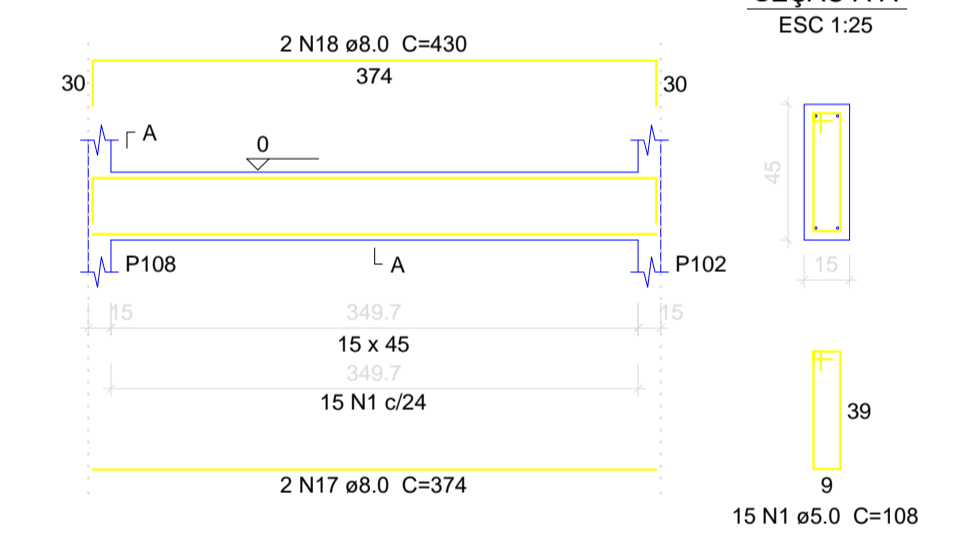
SEÇÃO A-A
ESC 1:25



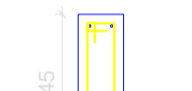
SEÇÃO A-A
ESC 1:25



V33
ESC 1:50



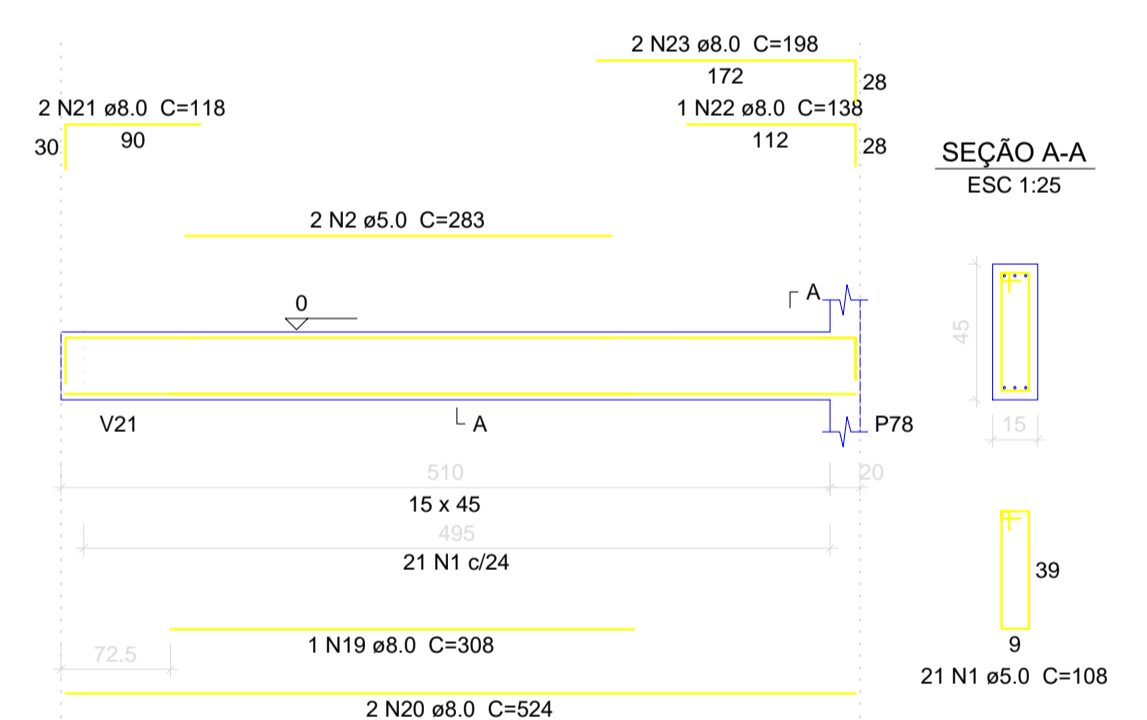
SEÇÃO A-A
ESC 1:25



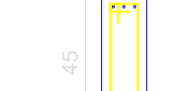
SEÇÃO A-A
ESC 1:25



V34
ESC 1:50



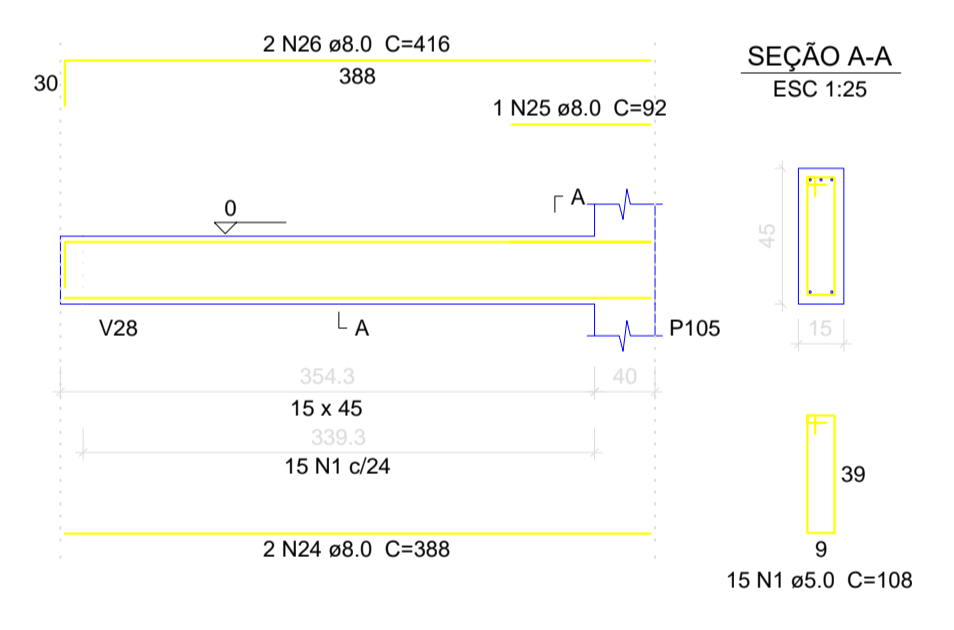
SEÇÃO A-A
ESC 1:25



SEÇÃO A-A
ESC 1:25



V35
ESC 1:50



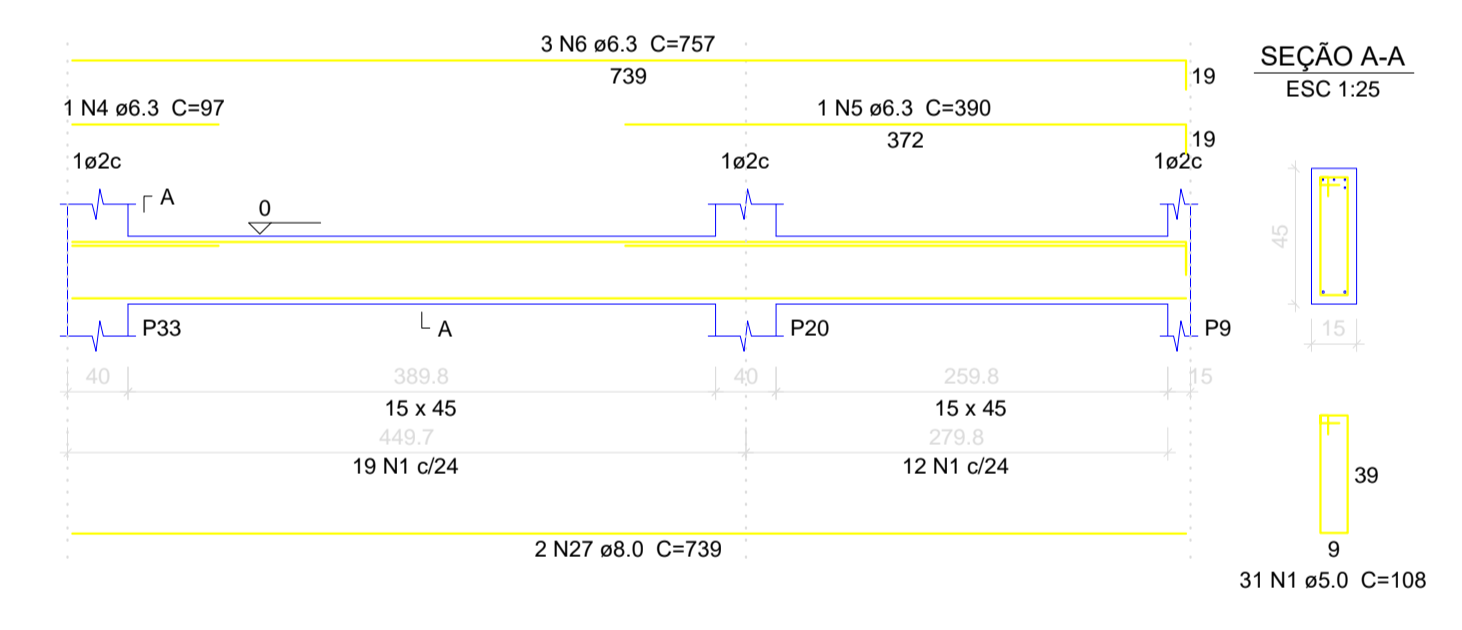
SEÇÃO A-A
ESC 1:25



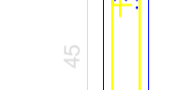
SEÇÃO A-A
ESC 1:25



V36
ESC 1:50



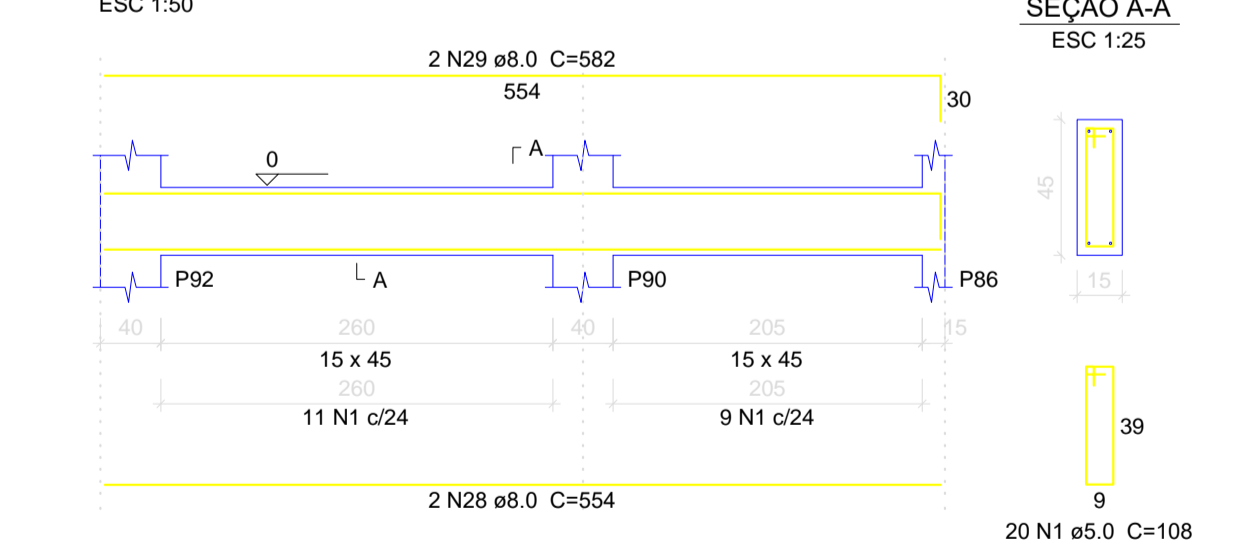
SEÇÃO A-A
ESC 1:25



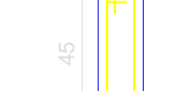
SEÇÃO A-A
ESC 1:25



V37
ESC 1:50



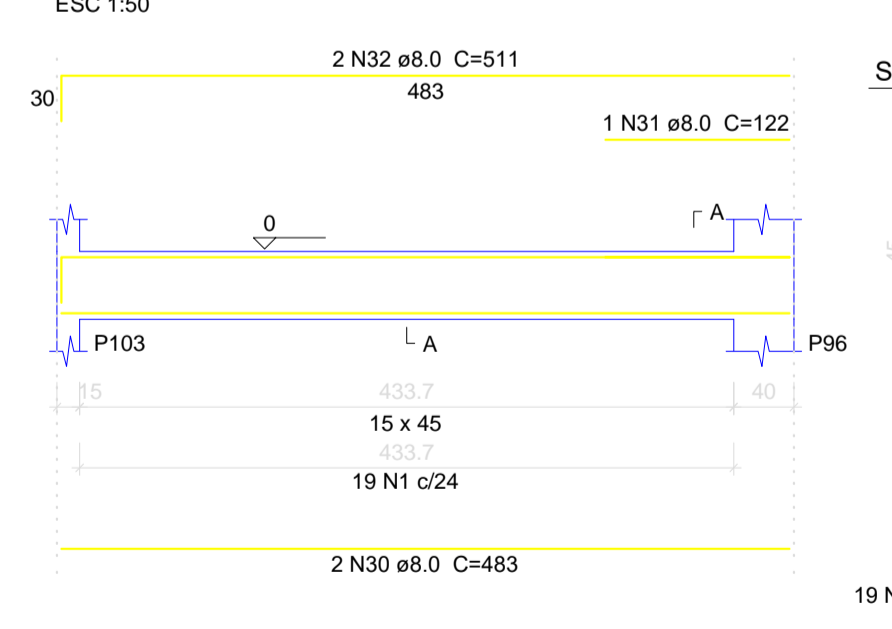
SEÇÃO A-A
ESC 1:25



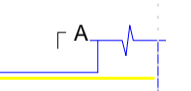
SEÇÃO A-A
ESC 1:25



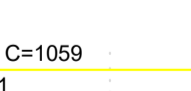
V38
ESC 1:50



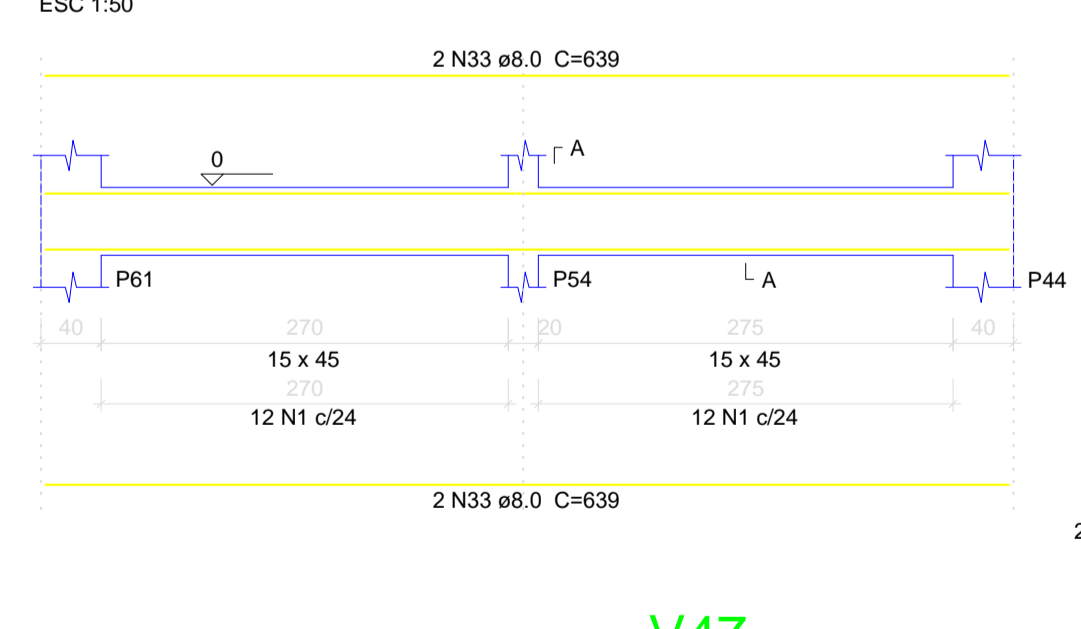
SEÇÃO A-A
ESC 1:25



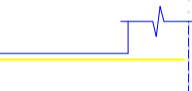
SEÇÃO A-A
ESC 1:25



V39
ESC 1:50



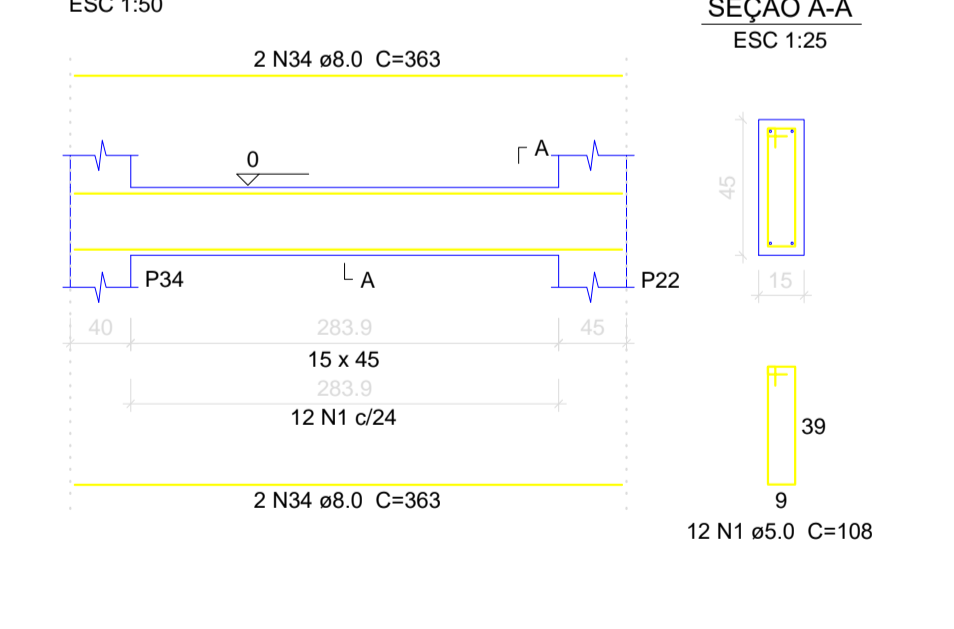
SEÇÃO A-A
ESC 1:25



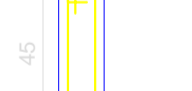
SEÇÃO A-A
ESC 1:25



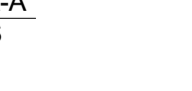
V41
ESC 1:50



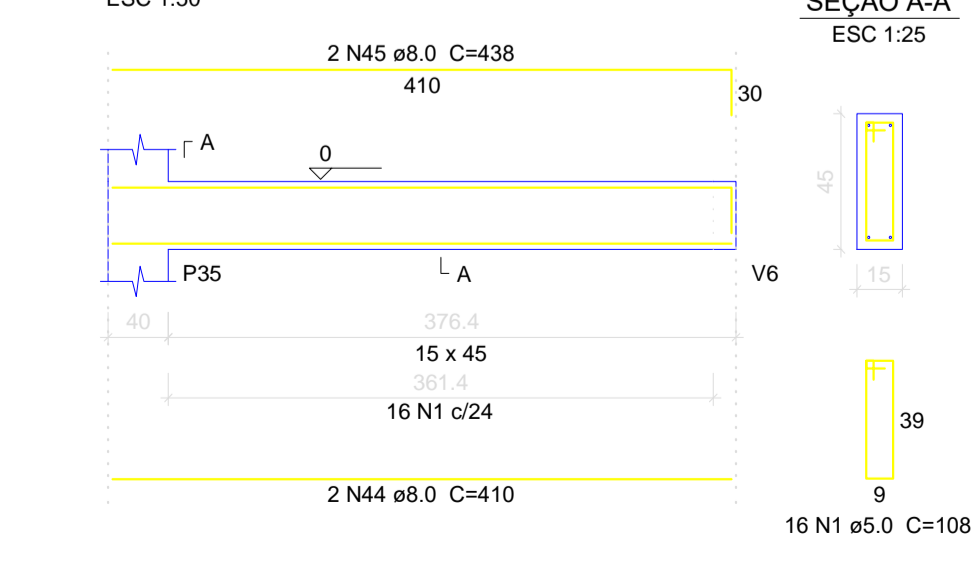
SEÇÃO A-A
ESC 1:25



SEÇÃO A-A
ESC 1:25



V45
ESC 1:50



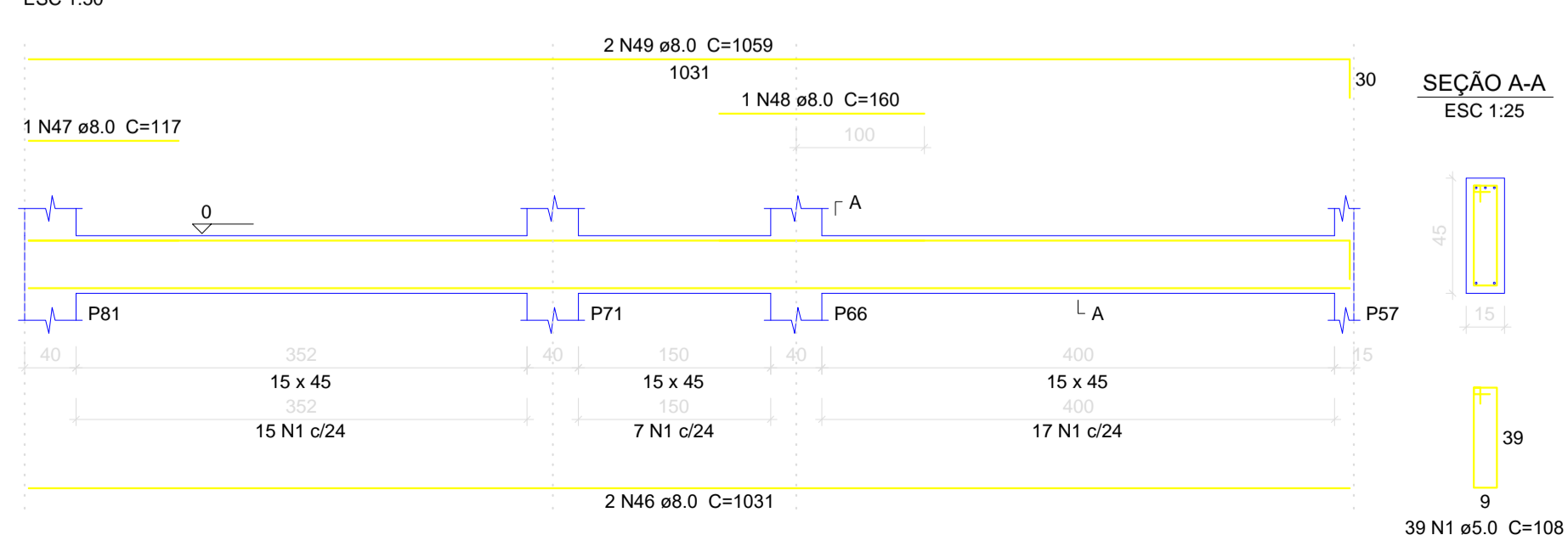
SEÇÃO A-A
ESC 1:25



SEÇÃO A-A
ESC 1:25



V46
ESC 1:50



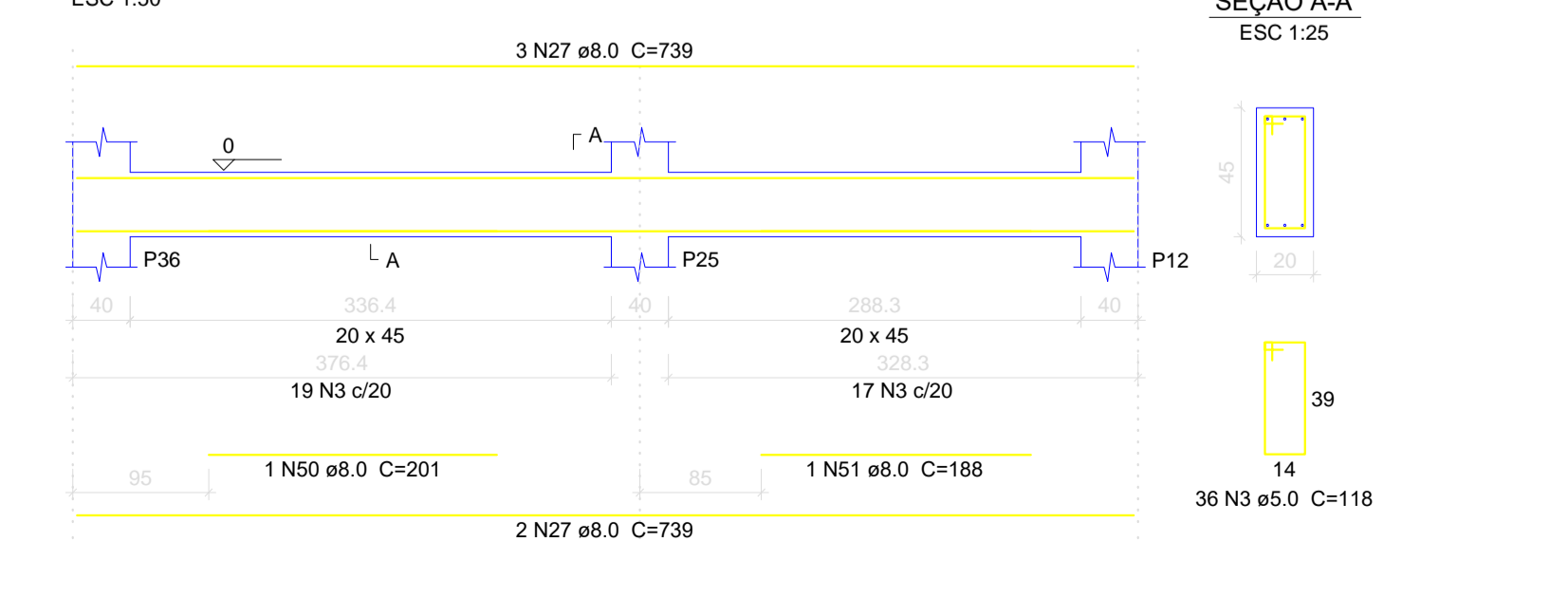
SEÇÃO A-A
ESC 1:25



SEÇÃO A-A
ESC 1:25



V47
ESC 1:50



SEÇÃO A-A
ESC 1:25



SEÇÃO A-A
ESC 1:25



PROJETO DE ENGENHARIA PRANCHA
06/14

OBJETO: Projeto Estrutural Hospital Municipal
END: Rua 16 nº 1.063 - Bairro Nacib Jabur Maluf - Itapagipe/MG
PROP: Município de Itapagipe-MG
CPF/CNPJ: 21.226.840/0001-47

Quadro de assinaturas:	
Proprietário CPF/CNPJ	Benice Nery Maia Prefeitura Municipal
Resp. Técnico CPF/CNPJ	Secretaria Municipal de Obras Rodolfo Costa Agreli CREA/SP:5070412203-LP

Aprovação:

--	--	--	--